

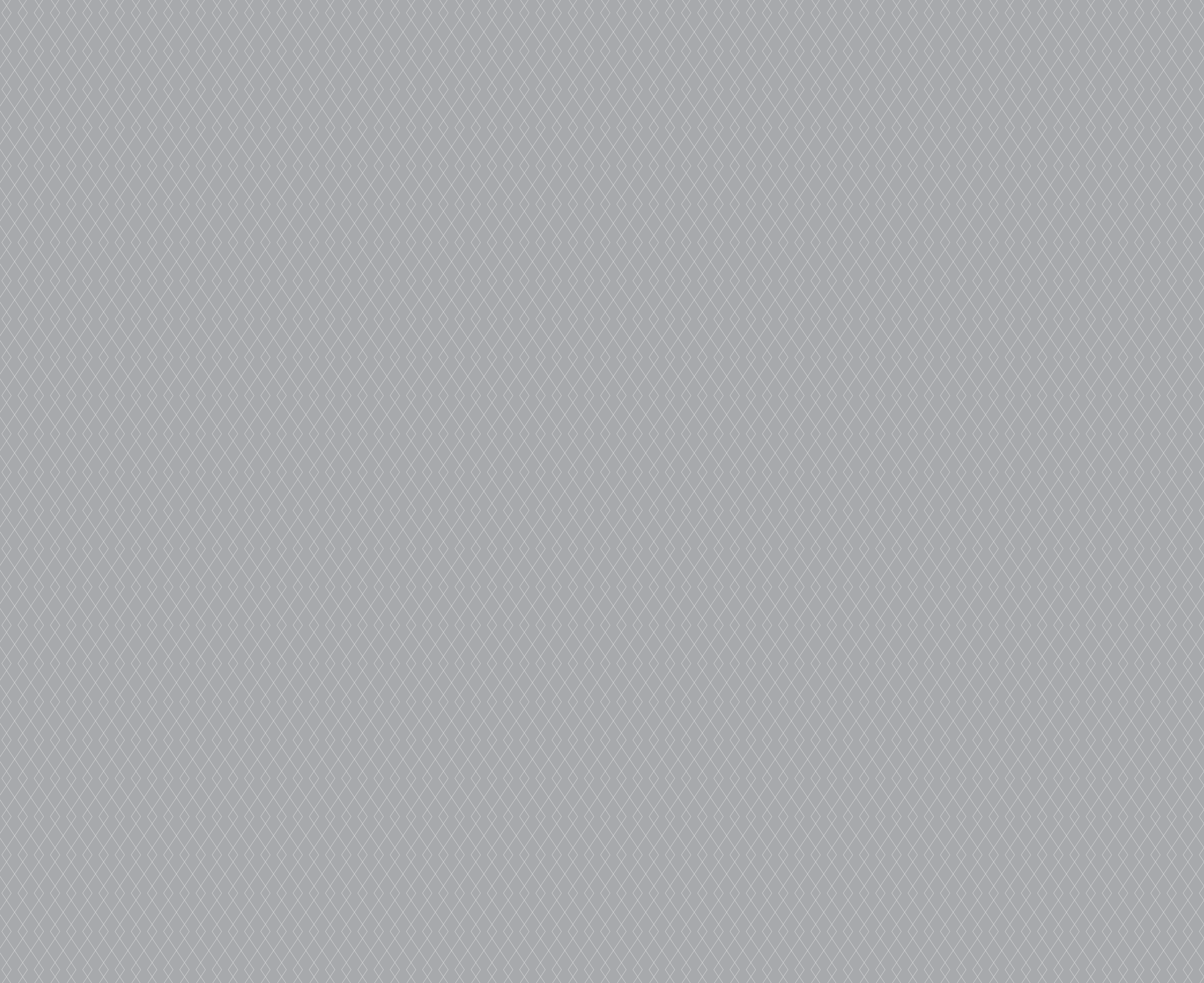


**BLUEDIAMOND**  
AT IMPERIAL PLAZA

David Vu & Brigitte Obregon  
Brokers

RE/MAX Ultimate Realty Inc., Brokerage  
Cell: 416-258-8493 Cell: 416-371-3116  
Fax: 416-352-7710

Email: [info@gta-homes.com](mailto:info@gta-homes.com)  
[WWW.GTA-HOMES.COM](http://WWW.GTA-HOMES.COM)



AMONG PRICELESS GEMS, THERE'S NONE SO RARE AND EXQUISITE  
AS THE BLUE DIAMOND, TREASURED FOR ITS BRILLIANCE, BEAUTY AND LUSTRE.  
A SYMBOL OF PRESTIGE AND REFINEMENT, ENSCONCED IN A TRULY  
UNSURPASSED SETTING. A PERFECT INSPIRATION FOR  
BLUE DIAMOND CONDOMINIUMS. AN ADDRESS WITHOUT EQUAL IN TORONTO.

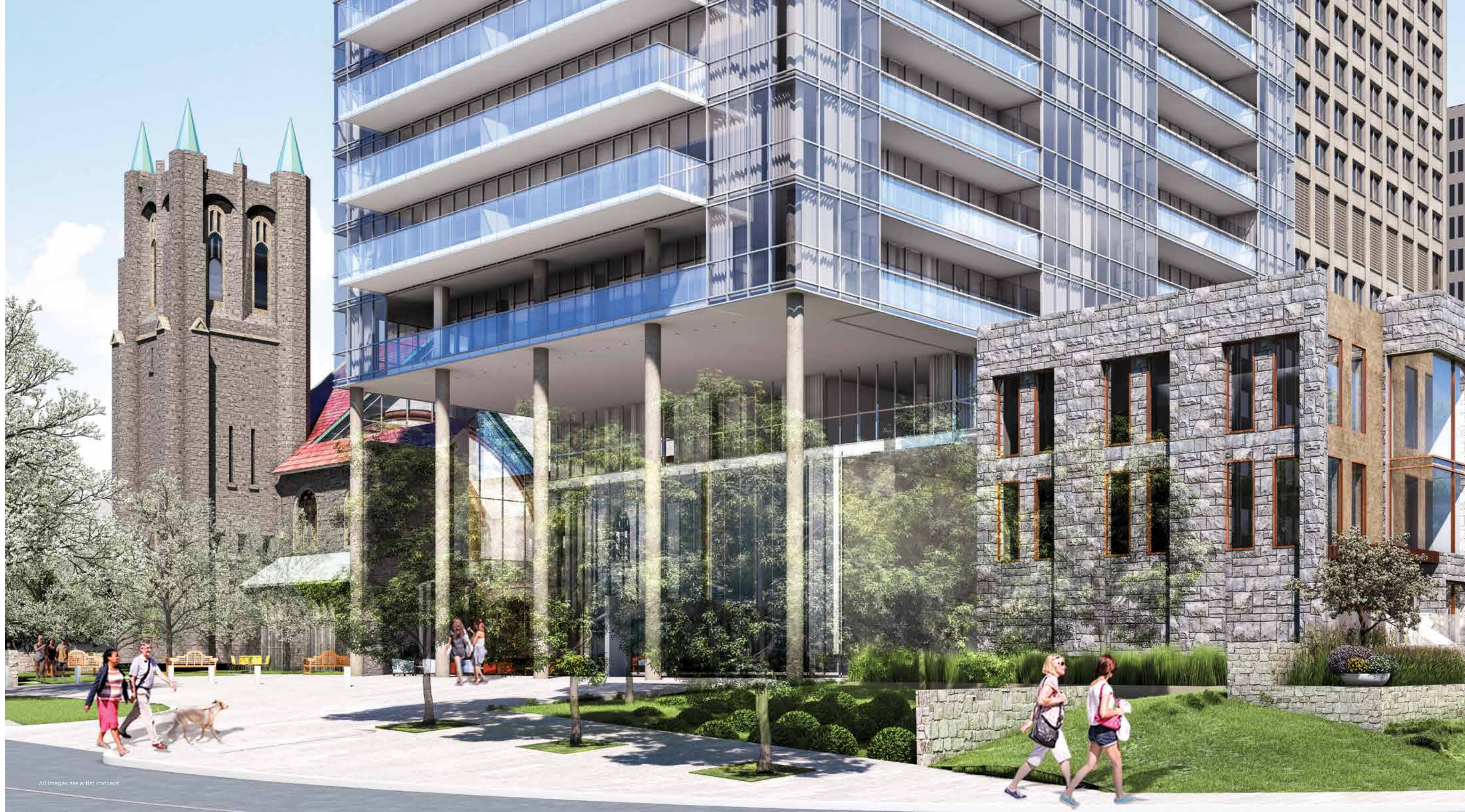


# wish upon a blue diamond

WELCOME TO BLUE DIAMOND CONDOMINIUMS AT IMPERIAL PLAZA. AN ADDRESS OF DISTINCTION, NESTLED IN THE EXCLUSIVE FOREST HILL NEIGHBOURHOOD AT AVENUE AND ST. CLAIR. STEEPED IN HERITAGE AND EMBELLISHED WITH LUXURY, THIS IS WHERE MAGNIFICENT ART AND ARCHITECTURE MEET DESIGN IN ITS PUREST FORM. OVERLOOKING THE FOREST HILL ESCARPMENT WITH SWEEPING FOREVER VIEWS OF THE CITY, THIS IS A RESIDENCE WITHOUT COMPARE IN TORONTO.



All images are artist concept.



## a shining landmark

A TRIBUTE TO THE MODERNISTIC STYLE, THE ARCHITECTURE OF BLUE DIAMOND IS DISTINGUISHED BY CLEAN GEOMETRIC LINES AND A DISTINCTIVE GREY BLUE FAÇADE. RESIDENTS AND VISITORS ARE WELCOMED IN AN IMPRESSIVE AND INVITING LOBBY WITH A SOARING DOUBLE HEIGHT CEILING AND AN ELEGANTLY FURNISHED LOUNGE CALLED THE GREAT HALL. EXPANSIVE GLASS WALLS FLOOD THE INTERIORS WITH LIGHT WHILE OFFERING GREAT VIEWS OF THE LANDSCAPED COURTYARD, MAKING THIS INDOOR/ OUTDOOR LOUNGE PERFECT FOR RELAXATION AND SOCIAL INTERACTION.





# diamonds are forever just like our views

PERCHED ON TOP OF THE FOREST HILL ESCARPMENT, BLUE DIAMOND OFFERS SWEEPING PANORAMIC VIEWS OF THE DRAMATIC DOWNTOWN SKYLINE AND THE SCENIC DEER PARK TO THE SOUTH AND EVER CHANGING LANDSCAPE TO THE NORTH. WATCH THE SPECTACULAR COLOURS OF THE SEASON AND THE SOARING HIGHRISES FRAMED AGAINST THE DEEP BLUE WATERS OF LAKE ONTARIO.

NORTH VIEW



## live in a brilliant setting

TIMELESS HISTORY MARKS THE ICONIC ENTRANCE TO BLUE DIAMOND. IT WAS HERE THAT THE FORMER DEER PARK UNITED CHURCH OPENED ITS DOORS IN 1913. TODAY, AS A DESIGNATED HERITAGE MONUMENT, ITS FAÇADE WILL BE CAREFULLY RESTORED AND THE INTERIOR TRANSFORMED INTO AN OPEN COURTYARD. THE DESIGN THOUGHTFULLY INCORPORATES PARK BENCHES, LANDSCAPING AND PUBLIC ART THAT WILL MAKE IT INVITING AND ENJOYABLE FOR RESIDENTS, WHILE ADDING VIBRANCY AND ACTIVITY TO THE STREETScape.



All images are artist concept.



All images are artist concept.

THE DESIGN CELEBRATES THE HISTORY OF THE CHURCH WITH A SEAMLESS INTEGRATION OF OLD AND NEW. THE TOWER RISES MAJESTICALLY BEHIND THE CHURCH, A MODERN FUSION OF GLASS, STONE AND PRECAST. WITH A PARK-INSPIRED SETTING AT ITS BASE AND MAGNIFICENTLY DETAILED SUITES ABOVE, BLUE DIAMOND IS DESTINED TO BECOME A NEW LANDMARK FOR THE NEIGHBOURHOOD.



# a lustrous urban oasis

THE BEAUTIFUL LANDSCAPING SEAMLESSLY CONNECTS THE ARCHITECTURE OF THE CHURCH WITH THE CONTEMPORARY LINES OF THE CONDOMINIUM, CREATING AN INVITING SPACE WITHIN THE HISTORIC COLONNADE. THE ENTRY COURT, WITH ITS LUSH TREE FOLIAGE, OFFERS A QUIET RETREAT FROM THE BUSTLE OF ST. CLAIR AVENUE. A RICH AND ELEGANT PALATE OF MATERIALS INCLUDES ALGONQUIN LIMESTONE AND KODIAK GRANITE PAVING, LIMESTONE SLAB STAIRS WITH STAINLESS STEEL RAILINGS, GRANITE BENCHES, SOPHISTICATED LIGHT BOLLARDS AND HIGH-QUALITY SHADE TREES.







## a cut above the ordinary

BLUE DIAMOND WILL OFFER RESIDENTS A STUNNING ROSTER OF LIFESTYLE AMENITIES. LEISURE TIME IS QUALITY TIME WITH A SUMPTUOUSLY APPOINTED LIBRARY LOUNGE AND A MULTI-PURPOSE BILLIARDS AND GAMES ROOM. EXCLUSIVE ACCESS TO THE IMPERIAL CLUB NEXT DOOR ALLOWS YOU TO UNWIND IN STYLE IN THE LUXURIOUS INDOOR POOL AND WHIRLPOOL SPA. TAKE YOUR WORKOUT ROUTINE TO THE NEXT LEVEL IN THE 10,000-SQ. FT. FITNESS AUDITORIUM WHICH ALSO INCLUDES TWO SQUASH COURTS AND A YOGA/PILATES STUDIO. PERFECT YOUR SWING IN A MODERN GOLF SIMULATOR ROOM. WATCH THE LATEST FILM IN ONE OF TWO STATE-OF-THE-ART THEATRE ROOMS. TWO COMFORTABLY APPOINTED GUEST SUITES ARE AVAILABLE FOR THE BENEFIT OF YOUR OVERNIGHT COMPANY.



All images are artist concept.

LIBRARY/LOUNGE



# the imperial club





All images are artist concept.

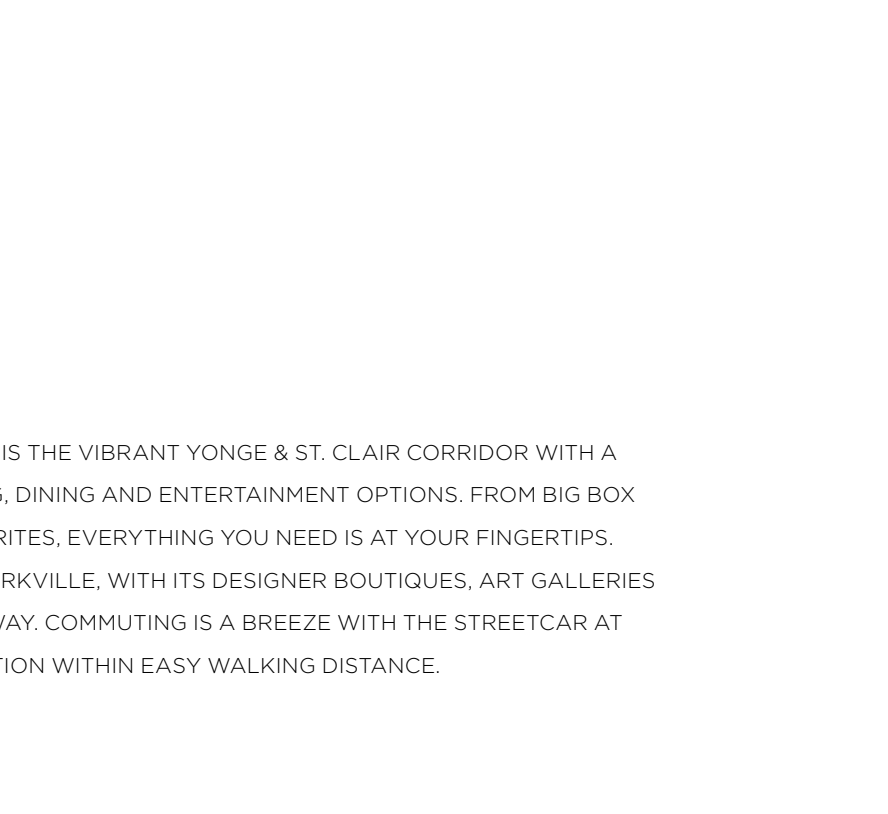
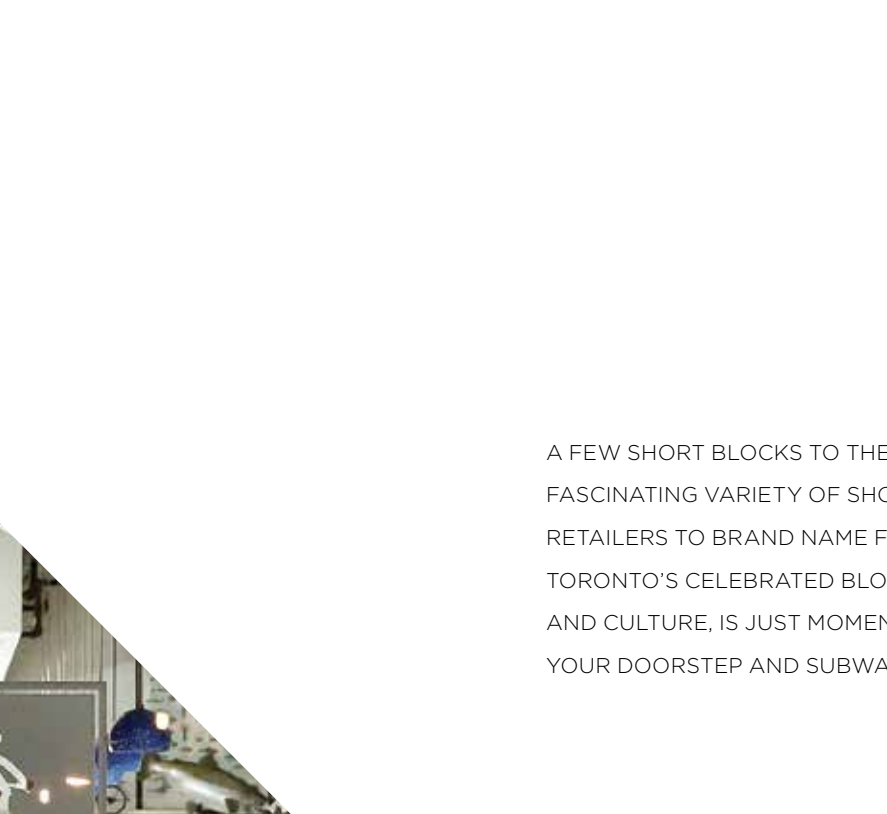
IMPERIAL PLAZA INDOOR POOL

# a multi-faceted neighbourhood

LIKE ITS NAMESAKE, THE BLUE DIAMOND NEIGHBOURHOOD OFFERS A RARE, MULTI-FACETED COMBINATION OF CONVENIENCE AND CONNECTIVITY, ENHANCED BY AN AMBIENCE OF SOPHISTICATION AND PRIVILEGE. AT ITS HEART IS THE PRESTIGIOUS FOREST HILL VILLAGE, AN EXCLUSIVE ENCLAVE OF SPECIALTY RETAILERS AND ELEGANT RESTAURANTS CATERING TO THE MOST REFINED TASTES. STATELY MANSIONS, BEAUTIFUL PARKS, VERDANT GREENSPACES AND LEAFY TRAILS ADD TO THE SPLENDOUR AND TRANQUILITY OF THE NEIGHBOURHOOD.







A FEW SHORT BLOCKS TO THE EAST IS THE VIBRANT YONGE & ST. CLAIR CORRIDOR WITH A FASCINATING VARIETY OF SHOPPING, DINING AND ENTERTAINMENT OPTIONS. FROM BIG BOX RETAILERS TO BRAND NAME FAVOURITES, EVERYTHING YOU NEED IS AT YOUR FINGERTIPS. TORONTO'S CELEBRATED BLOOR-YORKVILLE, WITH ITS DESIGNER BOUTIQUES, ART GALLERIES AND CULTURE, IS JUST MOMENTS AWAY. COMMUTING IS A BREEZE WITH THE STREETCAR AT YOUR DOORSTEP AND SUBWAY STATION WITHIN EASY WALKING DISTANCE.





# shine bright like a diamond

PRESENTING A FRESH NEW TAKE ON URBAN SOPHISTICATION. A MAGNIFICENT SELECTION OF SUITES DESIGNED FOR ELEGANT LIVING WITH CLEAN OPEN CONCEPT INTERIORS AND LAVISHLY DETAILED FINISHES. THINK PREMIUM PLANK HARDWOOD FLOORING, MARBLE AND GRANITE COUNTERS, EXQUISITE SPA INSPIRED ENSUITES, GOURMET CHEF KITCHENS AND PREMIUM STAINLESS STEEL APPLIANCES. THIS IS OPULENT LIVING TAKEN TO A WHOLE NEW LEVEL.



# a visionary leader



CALIFORNIA CONDOS



YORKVILLE PLAZA II



RBC 5001 YONGE ST.



YORKVILLE PLAZA



IMPERIAL PLAZA



MARINA DEL REY



976 CONDOMINIUMS



THE WAREHOUSE LOFTS



KINGS COURT



MADISON CENTRE



DAVID FELDMAN, PRESIDENT & C.E.O.

CAMROST-FELCORP, UNDER THE LEADERSHIP OF DAVID FELDMAN, HAS SUCCESSFULLY ESTABLISHED ITS PLACE AS ONE OF THE FOREMOST NAMES IN THE DEVELOPMENT INDUSTRY FOR OVER 35 YEARS BY CONSISTENTLY LEADING THE WAY IN CREATING LANDMARK CONDOMINIUMS AND IS BEHIND MANY OF THE GREATER TORONTO AREA'S MOST DISTINCTIVE AND MEMORABLE RESIDENTIAL COMMUNITIES AND COMMERCIAL PROPERTIES. UNIQUE IN DESIGN, EACH IS BUILT ON A SIMILAR FOUNDATION OF EXCELLENT CRAFTSMANSHIP, A PRE-EMINENT ADDRESS AND A STYLE THAT IS AHEAD OF ITS TIME.

CAMROST-FELCORP'S IMPRESSIVE PORTFOLIO INCLUDES OVER 10,000 RESIDENCES AND MORE THAN 1 MILLION SQUARE FEET OF OFFICE AND RETAIL SPACE. AMONG THE LANDMARK RESIDENCES: IN MIDTOWN TORONTO, THE ICONIC IMPERIAL PLAZA, THE NEW RESIDENCES OF YORKVILLE PLAZA, YORKVILLE PLAZA II, THE AVENUE, ONE GLEN PARK AND VILLAGE GATE IN LOWER FOREST HILL; IN DOWNTOWN TORONTO, 976 CONDOMINIUM RESIDENCES AND KINGS COURT; THE SAVOY IN DON MILLS; THE PALACE AND MANOR GATES IN MISSISSAUGA; AND BOTH THE MULTI-FACETED MYSTIC POINTE COMMUNITY AND THE AWARD-WINNING MARINA DEL REY IN SOUTH ETOBICOKE.

# era architects



## HERITAGE PRESERVATION

ERA SPECIALIZES IN THE AREAS OF ARCHITECTURE, HERITAGE CONSERVATION, URBAN AND RURAL PLANNING, AND LANDSCAPE AND URBAN DESIGN. OUR CORE INTEREST IS IN CONNECTING HERITAGE TO WIDER CONSIDERATIONS OF URBAN DESIGN. RECENT AND ONGOING PROJECTS IN BUILDING CONSERVATION AND ADAPTIVE REUSE INCLUDE TORONTO'S DISTILLERY DISTRICT, MAPLE LEAF GARDENS, EVERGREEN BRICK WORKS, UNION STATION AND ARTSCAPE WYCHWOOD BARN. OUR EXPERTISE EXTENDS TO CULTURAL PLANNING AND FACILITATING COMMUNITY DIALOGUE.

# janet rosenberg & studio



## LANDSCAPE ARCHITECTURE

JANET ROSENBERG & STUDIO IS ONE OF CANADA'S MOST DISTINGUISHED LANDSCAPE ARCHITECTURE AND URBAN DESIGN STUDIOS. WE ARE RECOGNIZED FOR OUR EXTENSIVE AND AWARD-WINNING PORTFOLIO THAT INCLUDES PUBLIC, COMMERCIAL AND INSTITUTIONAL SPACES AS WELL AS PRIVATE RESIDENTIAL GARDENS, GREEN ROOFS AND CONDOMINIUM TOWERS. AS CREATIVE THINKERS WHO DEVELOP OUT-OF-THE-BOX SOLUTIONS, WE ENVISION ECOLOGICALLY-RESPONSIBLE LANDSCAPES THAT RESPOND TO THE URBAN ENVIRONMENT AND ENHANCE THE QUALITY OF LIFE.

# diamond schmitt architects



## ARCHITECT & INTERIOR DESIGN

DIAMOND SCHMITT ARCHITECTS IS A LEADING CANADIAN FULL-SERVICE ARCHITECTURAL PRACTICE, WITH PROJECTS THROUGHOUT NORTH AMERICA, EUROPE, CARIBBEAN AND THE MIDDLE EAST. WE DESIGN A BROAD RANGE OF BUILDING STYLES FOR CULTURAL, CIVIC, ACADEMIC, HEALTHCARE, RESIDENTIAL AND COMMERCIAL USES. IN THE LAST FIVE YEARS WE HAVE EXECUTED MORE THAN 10 MILLION SQUARE FEET OF COMPLETED SPACE. THE SCOPE OF OUR SERVICES IS WIDE, VARYING BETWEEN RELATIVELY SMALL SCALE STRUCTURES TO PROJECTS OF THE GREATEST SIZE AND COMPLEXITY.



Diamondcorp



Building Excellence since 1976

ALL RENDERINGS ARE ARTIST'S CONCEPT ONLY AND MAY NOT BE AN ACCURATE REPRESENTATION OF THE FINAL PRODUCT. ONLY CHATTELS, FEATURES AND FINISHES SET OUT IN SCHEDULE 'B' TO THE AGREEMENT OF PURCHASE AND SALE ARE INCLUDED IN THE PURCHASE PRICE. ILLUSTRATIONS MAY INCLUDE FINISHES, FEATURES AND FIXTURES THAT ARE UPGRADES OR EXTRAS WHICH MAY NOT BE AVAILABLE OR WHICH MAY BE OFFERED AT EXTRA COST. ALTHOUGH IT TRIES TO ENSURE THE ACCURACY AND COMPREHENSIVENESS OF THE INFORMATION PRESENTED IN THIS BROCHURE AND OTHER MARKETING MATERIAL, THE VENDOR DOES NOT GUARANTEE THAT THE INFORMATION PRESENTED ACCURATE, COMPLETE OR FREE FROM ERRORS. THE VENDOR SHALL NOT BE LIABLE TO ANY USER OR PERSON FOR ANY INACCURACY, ERROR OR OMISSION OR LOSS RESULTING FROM RELIANCE ON INFORMATION CONTAINED IN THIS BROCHURE OR OTHER MARKETING MATERIAL AND WILL NOT BE LIABLE FOR ANY DAMAGES (WHETHER DIRECT OR INDIRECT INCLUDING BUT NOT LIMITED TO ECONOMIC LOSS, CONSEQUENTIAL, PUNITIVE, AGGRAVATED, EXEMPLARY, GENERAL OR SPECIAL) RESULTING FROM THE USE IF ANY INFORMATION CONTAINED HEREIN OR IN ANY OTHER MARKETING MATERIAL. ERRORS AND OMISSIONS EXCEPTED.

David Vu & Brigitte Obregon  
Brokers  
RE/MAX Ultimate Realty Inc., Brokerage  
Cell: 416-258-8493      Cell: 416-371-3116  
Fax: 416-352-7710  
Email: [info@gta-homes.com](mailto:info@gta-homes.com)  
[WWW.GTA-HOMES.COM](http://WWW.GTA-HOMES.COM)